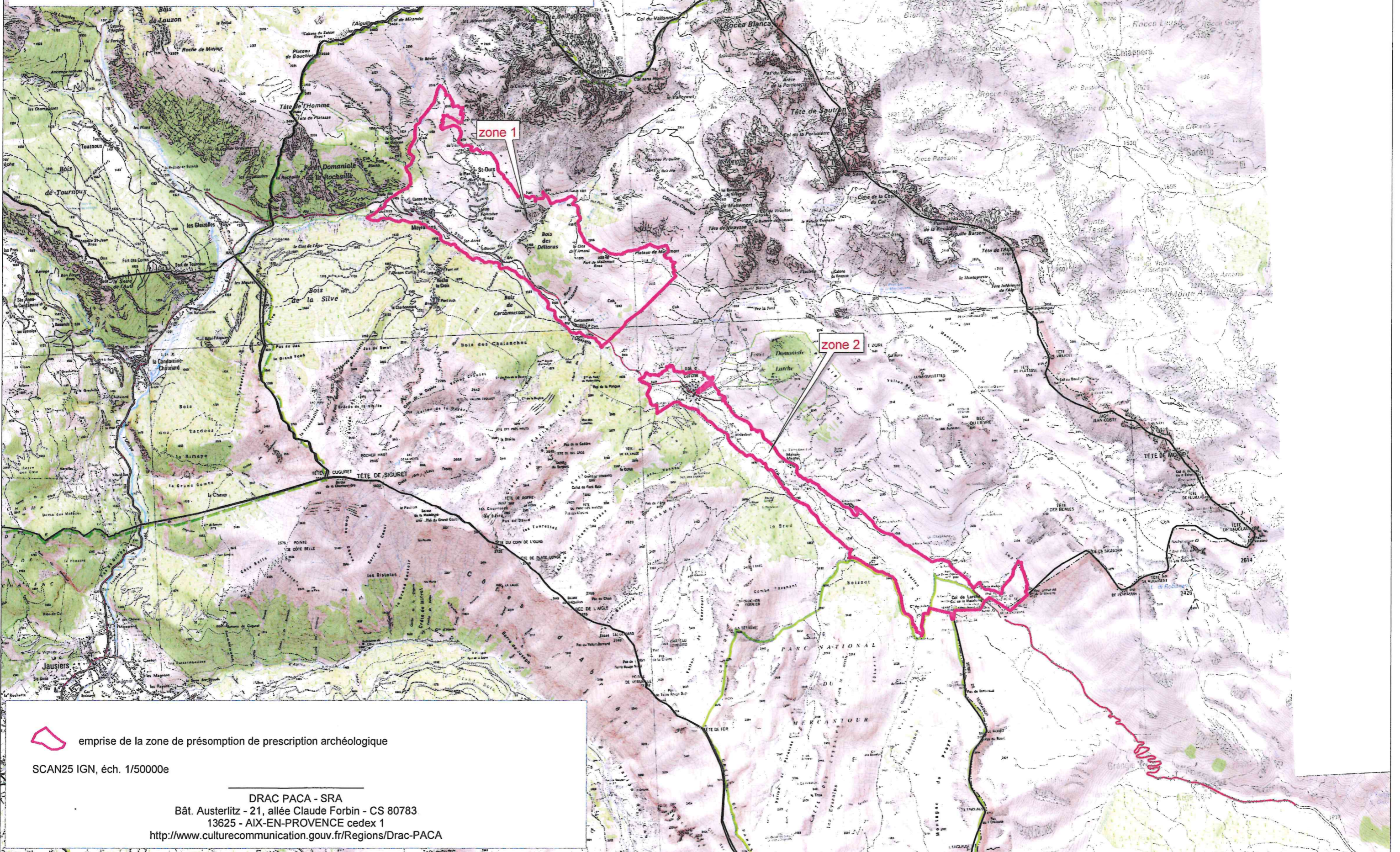




**PRÉFET
DE LA RÉGION
PROVENCE-ALPES-
CÔTE D'AZUR**

Liberté
Égalité
Fraternité

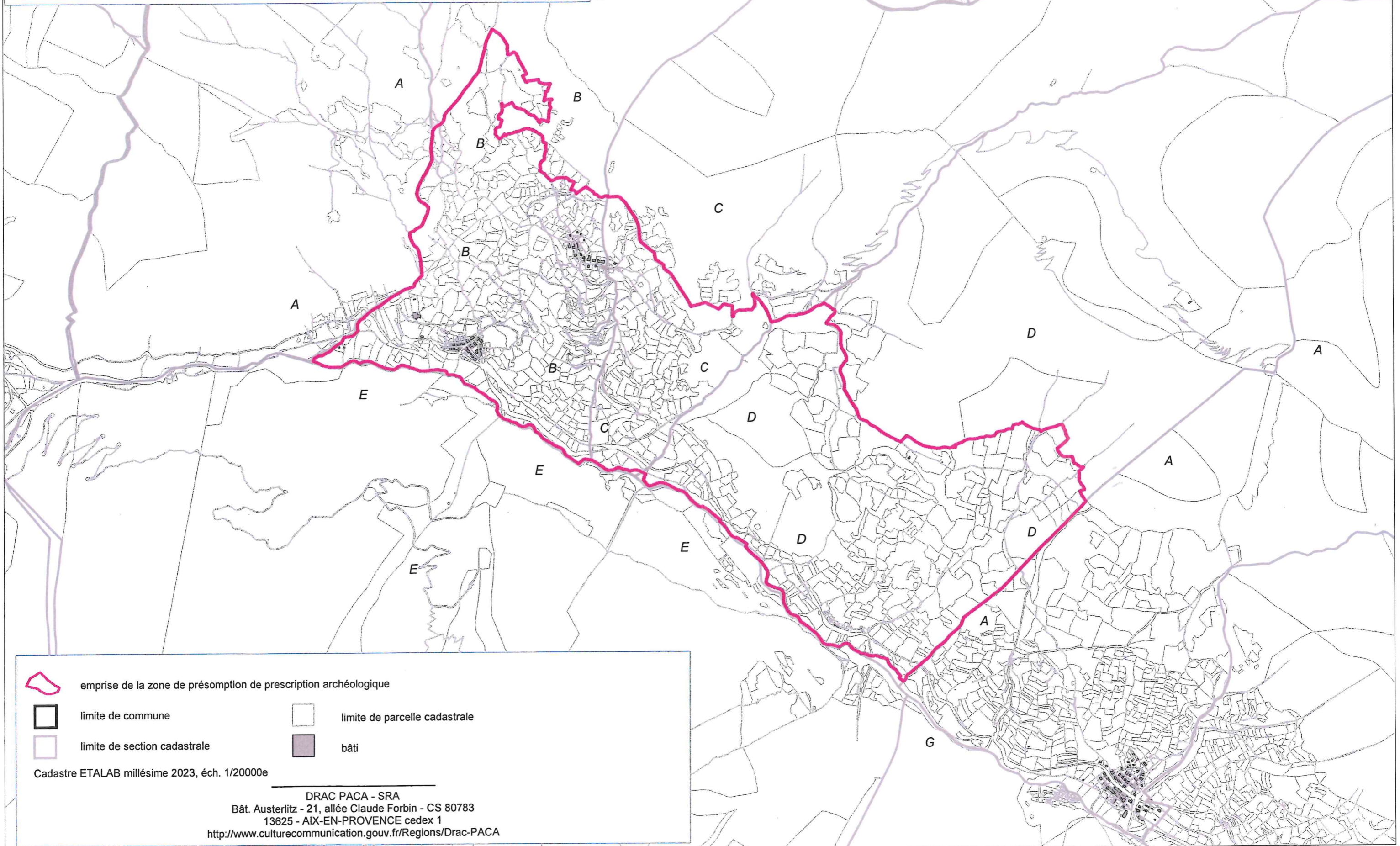
Direction régionale des affaires culturelles
Service régional de l'archéologie
Département des Alpes-de-Haute-Provence,
Commune de Val d'Oronaye
Vue générale
Arrêté 04120-2023, pièce annexe n°04120-I1








emprise de la zone de présomption de prescription archéologique

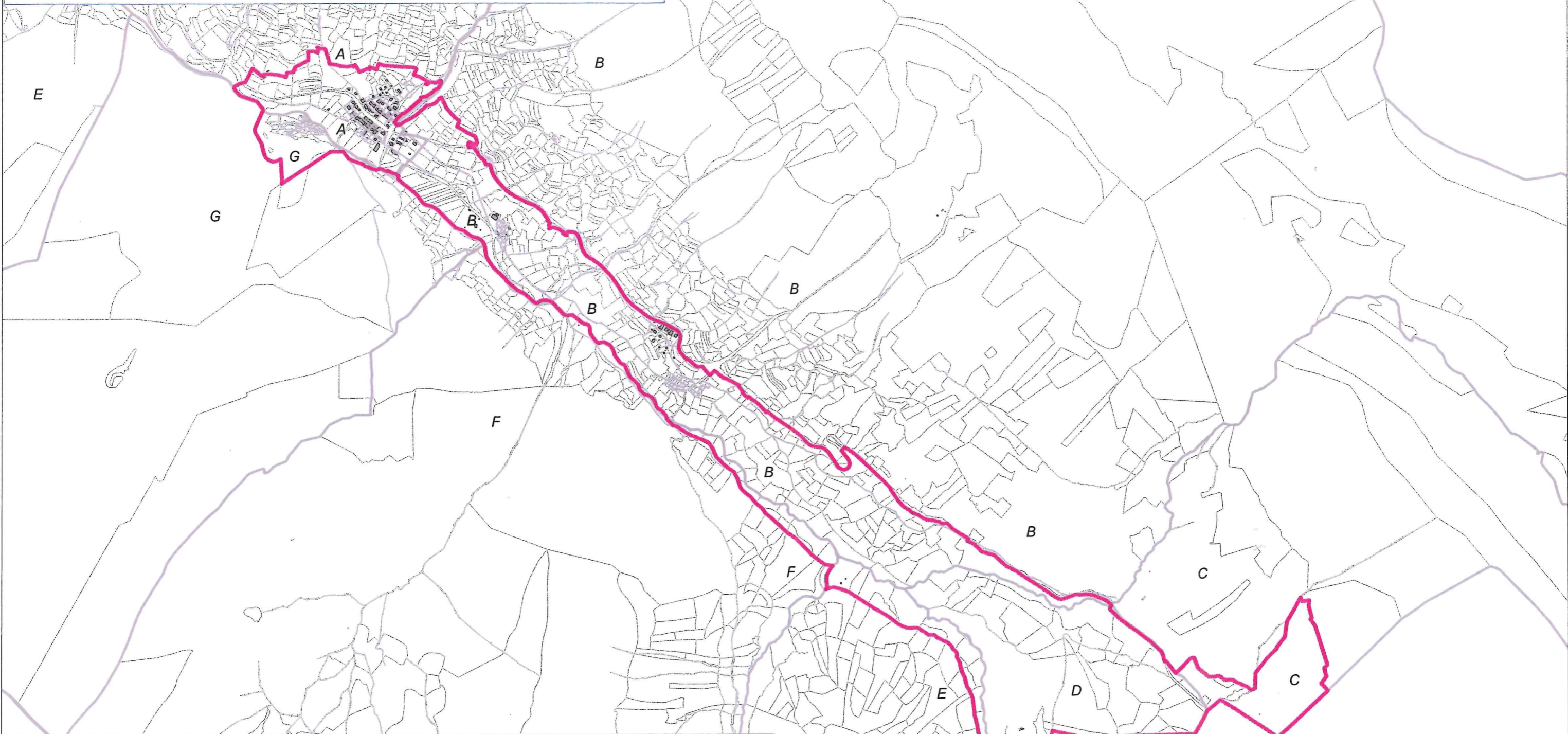
SCAN25 IGN, éch. 1/50000e





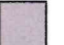
DRAC PACA - SRA
Bât. Austerlitz - 21, allée Claude Forbin - CS 80783
13625 - AIX-EN-PROVENCE cedex 1
<http://www.culturecommunication.gouv.fr/Regions/Drac-PACA>



-  emprise de la zone de présomption de prescription archéologique
-  limite de commune
-  limite de section cadastrale
-  limite de parcelle cadastrale
-  bâti

Cadastre ETALAB millésime 2023, éch. 1/20000e



-  emprise de la zone de présomption de prescription archéologique
-  limite de commune
-  limite de section cadastrale
-  limite de parcelle cadastrale
-  bâti

Cadastre ETALAB millésime 2023, éch. 1/20000e